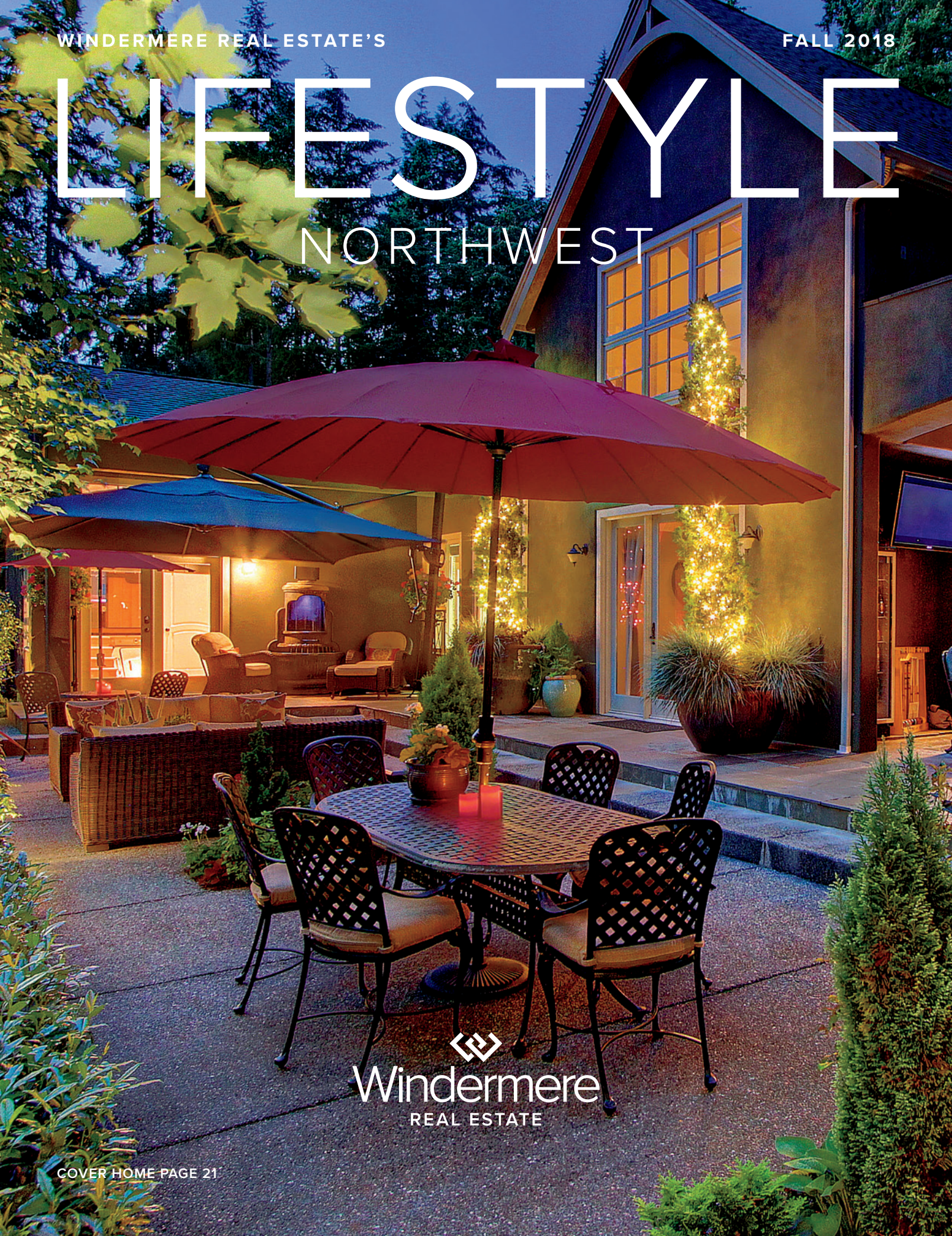


WINDERMERE REAL ESTATE'S

FALL 2018

LIFESTYLE

NORTHWEST



Windermere
REAL ESTATE

FALL 2018




LEADING
REAL ESTATE
COMPANIES®
of THE WORLD

windermere.com

LIFESTYLE

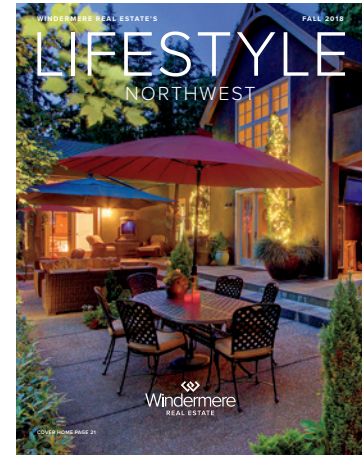
NORTHWEST

©2018 WINDERMERE SERVICES

ON THE COVER

Woodway

21



Bainbridge Island

3-11

Kitsap Peninsula

12-13

Camano Island

14

Vashon Island

15-18

Port Townsend

18

Edmonds, Mukilteo,
Everett, Woodway
& Seattle

19-21

Whidbey Island

22-23



Bainbridge Island is the pearl of the Puget Sound. Just a short ferry ride from downtown Seattle, visitors are immediately welcomed by the island's flourishing greenery and dramatic shoreline. With the Olympic Mountains to the west, and Mount Rainier to the east, residents of Bainbridge Island cherish the natural beauty and close-knit community. On top of all the opportunities for outdoor recreation, Winslow, the Island's most prominent commercial center, is filled with charming shops and restaurants. Bainbridge Island residents enjoy the benefits of a small town environment while living only 30 minutes by ferry from the hustle and bustle of the city.



Port Madison Waterfront

Classic Nantucket-style on the shore of 225 feet of coveted low-bank, west-facing waterfront, deepwater dock & boathouse! #1336345. \$3,580,000.

Ty Evans • 206.795.0202



Stylish View Home

Exceptional one-story living with unparalleled views from Mt. Baker to Elliott Bay. 2,081 sq. ft., 3 bedrooms, remarkable finishes. #1309960. Sold for \$1,456,000.

Debbie Nitsche • 206.714.6190



Garden Oasis, Guest Quarters

Home on sunny, private lot. Stunning kitchen, main floor master, guest quarters. Vaulted ceilings, spacious rooms, lush views. #1316734. \$1,248,000.

Patti Shannon • 206.755.5139



Manzanita Bay Waterfront

NW Contemporary on 91 feet of low-bank waterfront. Spacious 4,000+ sq. ft. home, abundant outdoor living spaces. #1270133. Listed at \$1,200,000.

Diane Sugden • 206.355.9179



West Port Madison Retreat

Expansive 5-bedroom home with newly remodeled kitchen, stunning gardens & panoramic views of the Sound & Cascade Mountains. #1270433. \$1,070,000.

Wendy Indvik • 206.276.1031



New Construction—Wing Point

Beautiful, newly finished Freestone Home in super location close to Winslow & Seattle ferry. #1225619. Listed at \$1,049,950. Represented the buyer.

Sid Ball • 206.617.7098



Sunny South End

Remodeled home on shy acre with serene water feature & expansive flagstone patio. Beautiful kitchen, updated baths. Move-in ready! #1322980. \$724,000.

Carleen Gosney • 206.909.2042



Storybook Charm

Charming home with wraparound porch. Private, yet close to town, schools & amenities. Newly updated kitchen, baths & utility room. #1324569. \$678,000.

Shannon Dierickx • 206.799.0888



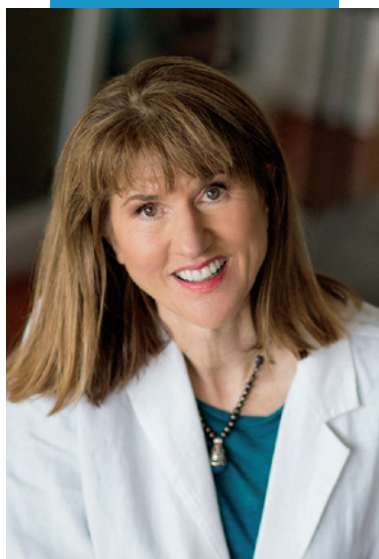
Modern Urban Living

In town! Sustainable living in this thoughtfully designed, energy-efficient, single-family townhome with abundant natural light. #1308624. \$675,000.

Jackie Syvertsen • 206.790.3600



carleen
gosney
MANAGING BROKER



*Representing Remarkable
Properties on Bainbridge Island
for Over 15 Years.*

*Ten-Time Recipient of Seattle
Magazine's "Best Realtor®" Award*

LUXURY
PORTFOLIO
INTERNATIONAL™

206.909.2042

carleen@windermere.com
CARLEENGOSNEY.COM

WRE/BI, INC.



Coveted Country Club Waterfront

Sold · Listed at \$2,985,000 · #1204108



Distinguished Home on Acreage

Sold for \$1,398,000 · #1257018



West-Facing Waterfront

Sold for \$1,123,000 · #1301503

BAINBRIDGE ISLAND



In-Town Oasis

A little bit of country in this sought-after Winslow neighborhood, complete with a white picket fence and charming fruit trees. With Brazilian cherry floors and an open floor plan, this 4-bedroom, 2,531 sq. ft. home offers a welcome retreat convenient to restaurants, shopping and the ferry to Seattle.

Offered at \$905,000 · #1329301



Historic Eagledale

This classic Bainbridge farmhouse has been updated with modern touches. Stunning views of Eagle Harbor and the ferries, all-day sun and expansive yard with fruit trees. Charming floor plan includes 3 bedrooms, 2.75 baths, an office, and family room. A marina for your boat is just down the street!

Offered at \$798,000 · #1302168

WENDY
INDVIK

— Broker, M.Arch —



EXPERIENCE.
COLLABORATION.
RESULTS.

WRE/BI, INC.

206.276.1031

wendyindvik@windermere.com
BAINBRIDGEISLANDRESIDENTIAL.COM



If it's Bainbridge, it's Ty.



TY EVANS

Premier Executive Director

206.795.0202 · tyevans@windermere.com

LUXURY
PORTFOLIO
INTERNATIONAL



SOLD · CAMBRIDGE CREST
sold for \$1,461,000



SOLD · FOX COVE LANE
sold for \$2,810,000



SOLD · WOOD AVE SW
sold for \$2,835,000 · *represented buyer*



Ty Evans · 206.795.0202 · tyevans@windermere.com



Sunset Avenue Views

Perfectly placed on a west-facing lot to enjoy beautiful sunsets and views of the Sound & Olympics. Fabulous outdoor living areas for entertaining. Light and open floor plan. Just a quick stroll to Battle Point Park!

Offered at \$958,000 · #1316750

Life on the Shore in Poulsbo

On the shores of Sandy Hook Road with majestic south-facing views of the Sound and Mt. Rainier + 115 of medium-bank waterfront. Spectacular gardens and outdoor living. Floor-to-ceiling windows capture the views.

Offered at \$1,068,000 · #1337053

Seabreeze View Townhome

South-facing 2-bedroom, 2.5-bath townhome with harbor and territorial views. Light and open floor plan includes Euroline windows, dramatic vaulted ceilings, quartz counters, stainless appliances & bamboo/slate floors.

Offered at \$624,000

DIANE Sugden



Proud to offer a high level
of professional care and
client services with the
mission of an enjoyable
and rewarding experience.

BROKER, ABR, CNE, LMS

206.355.9179

DIANESUGDEN@WINDERMERE.COM

DIANESUGDEN.COM

WRE/BI, INC.



Stunning Modern Contemporary

Truly a work of art! Just completed, this beautiful sanctuary on .92 acre provides a calm connection to nature just steps to beach access and Battle Point Park. Breathtaking design with soaring ceilings, open floor plan, amazing chef's kitchen, fine craftsmanship and finishes. Offered at \$1,195,000. #1309989.

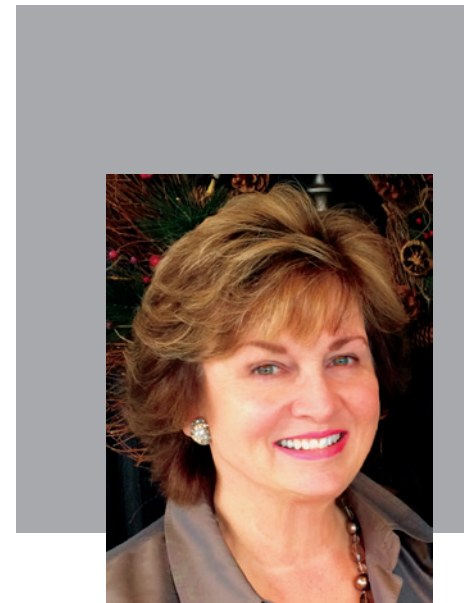
Diane Sugden · 206.355.9179 & Jan Johnson · 206.371.8792



Wing Point Golf Community

Stroll to town from this home situated on a quiet cul-de-sac in Wing Point. Spacious, open design features 3 bedrooms and 2.5 baths with both formal and casual living spaces, and 2 fireplaces. Private deck, fenced backyard with mature landscaping. Sited on a .44-acre lot close to downtown Winslow and Seattle ferries and just steps to Hawley Cove waterfront park.

Offered at \$679,000 · #1288425



JAN JOHNSON

35 Years of Experience

Intuitive Negotiator

Integrity & Patience

Strong Code of Ethics

206.371.8792

janj@windermere.com

BROKER, PREMIER DIRECTOR

LUXURY MARKETING SPECIALIST

WATERFRONT ESTATE SPECIALIST

CERTIFIED NEGOTIATION EXPERT

Rare & Historic Opportunity

Originally Sunnyhill Dairy, these gorgeous 10+ acres are just minutes to Fort Ward Park, beaches, and the Pleasant Beach Village. A large duplex stands guard on the hill above established fruit orchards, trails through berries, and a 6-stall barn, while a winter stream runs through the southwest portion. Enjoy as is, bring your horses, remodel or rebuild! #1318506. Offered at \$1,595,000. WRE/BI, Inc.

Jan Johnson · 206.371.8792 & Diane Sugden · 206.355.9179

V
S
VESNA
SOMERS



JD

PREMIER DIRECTOR

WATERFRONT ESTATE SPECIALIST
CERTIFIED NEGOTIATION EXPERT

206.947.1597

vesna@windermere.com

VesnaSomers.com · WRE/BI, INC.

exceptional work ethic

compassionate & involved

client satisfaction paramount



Port Madison Waterfront

A magical winding drive leads to this gorgeous Bob Hubble-designed Cape Cod waterfront home with covered wraparound porch overlooking the Sound, Sandspit, and Mountains. Lovely guest quarters. Stairs to waterfront—launch a kayak or go fishing or crabbing! Short stroll to Fay Bainbridge Park.

Offered at \$1,400,000 · #1329625



Meadowmeer Home on Acreage

Fabulous one-level brick and cedar home on 2.47 acres across from Meadowmeer Golf and Bainbridge Athletic Club. Main floor master plus 2 more bedrooms, office, formal living and dining. Light-filled great room with remodeled kitchen. Daylight walkout lower level with guest quarters. 3-car garage.

Offered at \$964,000 · #1300617

Great Bainbridge Island Location



Parklike Setting

Stunning, south-facing cedar log Pan Abode home in a private, parklike setting surrounded by open space. Four bedrooms including main floor master in 3,000+ sq. ft. of living space. Large deck, established landscaping, fruit trees, and sport court. Great location near Lynwood Center. #1313632. \$838,000.

Lorraine “Lauren” Davee

206.794.3397 · BAINBRIDGEISLANDPROPERTIES.COM · WRE/BI, INC.

ellin
spenser
managing broker



(206) 914-2305
ellin@windermere.com
ELLINSPENSER.COM

Private Setting in Poulsbo



Custom Home on Acreage

Large custom home on 2.4 acres has everything you want for all your work and fun activities. Featuring an in-ground heated pool, huge barn/shop with RV parking, loft. Four bedrooms including main floor master, open kitchen/living room plus office, loft, solarium, TV room...the possibilities are endless! #1268058. Offered at \$830,000. WRE/BI, Inc.

Kingston 360.297.2661 • Poulsbo 360.779.5205 • Silverdale 360.692.6102 • WRE/West Sound, Inc.



Charming Manette Home

Meticulous 2015 remodel. New insulation, electrical, plumbing, sheetrock, double-pane windows, hardwood floors & 30-year roof. #131511. \$375,000.

Catherine Arlen • 360.340.8186



Bremerton New Construction

Craftsman-style finishes, open-concept design. Chef's kitchen with solid stone countertops & stainless steel appliances. Minutes to ferry. #1272366. \$335,000.

Catherine Arlen • 360.340.8186



In-Town Kingston

Large daylight rambler close to ferries. 3 bedrooms, den & great room on main level + finished basement & bonus room on 3/4 acre. #1297901. \$699,000.

Lorna Muller • 360.620.3842



Kingston View Home Near Ferry

Drop-dead Sound view and gardens to match! Main-floor master, granite & stainless kitchen, 3-car garage plus studio. Sunny 1.24-acre lot. #1315912. \$659,900.

Cathy Morris • 360.271.8448



Beautiful No-Bank Waterfront

Idyllic Lemolo home—gracious 3,140 sq. ft. floor plan. Watch boats from the large deck at water's edge. Well-appointed kitchen. #1291971. \$939,000.

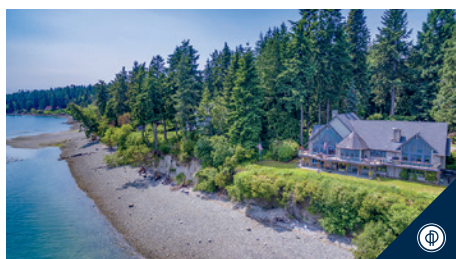
Joni Kimmel & Bridget Young • 360.509.6988



Serenity in Port Gamble

3+ acre property boasts a beautiful 4-bedroom home, large deck, 2 stall barns, 5-car garage, and easy access to ferry + main highways. #1292270. \$799,000.

Bonnie Chandler • 360.509.4949



Agate Passage Arboretum

Stunning NW Craftsman on 5.5 acres & 226 ft. of low-bank waterfront. Spectacular grounds and main floor living with 2 master suites. #1307883. \$2,370,000.

Mary Richards • 360.509.3609



Desirable Forest Rock

Gorgeous 4-bedroom, 2.5-bath home perched to showcase the stunning Olympics. Well-appointed with functional floor plan. #1317860. \$475,000.

Alyssa Ahern • 360.930.2628



Bremerton Waterfront Home

95 ft. no-bank waterfront. Olympic views. 4,144± sq. ft. 3 bedrooms, 3 baths, 1,500 sq. ft. separate guest quarters. 2,252 sq. ft. shop. #1309448. \$845,000.

Mark Danielsen • 360.509.1299



Seabeck NW Lindal Home

1,927 sq. ft. Northwest home, large kitchen, master on main, furnace/heat pump, Hardi, RV carport and studio on 2.27 acres. #1320263. \$489,900.

Jeanette Paulus • 360.286.4321



Silverdale New Construction

Early opportunity to purchase in Phase II of Wood Bridge. Award-winning CK schools, community dog park, amazing central location. #1285924. \$545,540.

S. Derrig • 360.710.8086 & S. Davy • 360.535.3625



Port Orchard Acreage

Beautiful home on sunny .46-acre lot surrounded by greenbelt on three sides. Large deck with surround sound and disabled access. #1305102. \$349,900.

Marie Hooker • 360.440.8550



New Homes in Eldon Trails at McCormick

The Harriet is a beautiful new home by Century Communities. Located in the highly desirable golf course community of McCormick Woods, the Harriet has a great-room style designed for comfortable gatherings. The designer finishes and large kitchen island are a chef's dream! McCormick contains miles of trails, golf, a short drive to all your needs, all within a quick 30-minute ferry ride to Seattle.

Offered at \$488,869 · #1330974

Ron Branch

206.605.8811 · LIVEATMCCORMICK.COM · WRE/EAST, INC.

888.643.8646 • 800.659.1686 • windermerestanwoodcamano.com • WRE/CIR



Just an hour north of Seattle, Camano Island boasts stunning sandy beaches, abundant wildlife, and a relaxed small-town charm. The island is a haven for crabbers, water-skiers, and beach-lovers who enjoy exploring the many idyllic beaches lining Camano's shores. Rich in history and culture, Camano Island is home to a vibrant arts community as well as an array of local restaurants, shops, markets, events, and festivals. There's always something to do on the island. Those who live here cherish the community, the pace of island life, and the serene setting. If you're looking for a weekend getaway, a second home away from the city, or a home to wake up to every day, visit us on the island. We'd love to see you!



Camano Home on Acreage

Beautifully landscaped view home with a shop and wonderful outdoor living space in a sought-after community. #1308249. \$625,000.

Steve Love & Julie Love • 425.239.0123



Camano Island Waterfront

Spectacular views from this quaint cottage overlooking Saratoga Passage and out to the Olympics with beach access close. #1299189. \$599,000.

Dianna Pence • 425.268.1799



Camano Island Low Bank

Perfectly designed beach home in desirable Long Beach with Mt. Rainier to Mt. Baker views over blue water. #1315391. \$1,250,000.

Steve Love & Julie Love • 425.239.0123



New View Home on Camano

Expansive views from fully finished daylight Rambler with large rooms and huge deck. Beach access close and only an hour to Seattle. #1312455. \$749,000.

Dianna Pence • 425.268.1799



Vacant Land on Camano

Great place to build a new home with easy off-island access and just an hour to Seattle. Stunning mountain and water views. #1228669. \$225,000.

Megan Johnson • 425.387.3681



Classic View Home on Camano

Mountain, Sound and the lights of town views from fabulous north Island home with plenty of trees for privacy. #1308891. \$799,500.

Jeni Bottin • 425.923.0528



Camano Island View Home

Turn-key home with views of the Cascades and Port Susan with beach access and boat launch nearby for crabbing and beachcombing. #1310123. \$299,000.

Steve Love & Julie Love • 425.530.0799



Camano Golf Course Home

Log home nestled on a corner lot in gated golf community. Unlimited golf, pools & lake plus close to beaches and parks. #1265040. \$370,000.

Jeni Bottin • 425.923.0528



Marysville Home on Acreage

Immaculate four-bedroom custom Rambler on acreage. Perfect commuter's location within easy distance to the freeway. #1300392. \$624,950.

Megan Johnson • 425.387.3681



Vashon Island offers a quiet country lifestyle while still remaining close to the city. Scenic roads wind through the rolling hills, leading to gorgeous parks and tiny towns that offer weekly farmers markets, tasty food and drink, live music, and award-winning distilleries. Natural beauty is abundant on Vashon Island, with incredible trails, beaches, parks, and outlooks that outdoor enthusiasts can explore whenever they please. Vashon is also home to a diverse artistic community, with galleries and theaters dotting the island, as well as a gallery cruise that takes place each month. This rural treasure is only accessible by ferry, thereby making it a true island getaway.



Waterfront Estate

Substantial home on 3+ acres & 170 feet of tidelands with waterside gazebo and boat ramp. Beach, woods, pasture, orchard and gardens. #1265774. \$1,350,000.
Beth de Groen • 206.463.9148 ext. 206



Maury Waterfront Home

Sweeping views from this home near Pt. Robinson lighthouse. Expansive covered decks, lovely gardens, 3-car garage with large studio. #1278388. \$1,125,000.
Mike Schosboek • 206.595.6764



Victorian Waterfront Estate

Nearly 10 idyllic acres and 870 ft. of shoreline. Gazebo with stairs to beach and 1,350 sq. ft. caretaker's cottage. #1242724. \$2,850,000.
Mary Margaret Briggs • 206.276.2158



Phenomenal Views

Exquisite high-bank waterfront home offers sweeping views, detailed craftsmanship and detached 2-car with loads of storage. #1308964. \$989,000.
Sue Carrette • 206.351.7772



Waterfront Contemporary

Spacious home with 78 feet of waterfront. Enjoy second kitchen, easy path to beach, excellent parking & plenty of deck space. #1301478. \$779,000.
Beth de Groen • 206.463.9148 ext. 206



Paradise Cove Cottage

First time on the market! Sweet 1-bedroom waterfront cabin with sleeping loft. Concrete bulkhead & boat house/hoist. #1315251. \$650,000.
Shirley Kinzer • 206.696.4200



Contemporary Farmhouse

Move-in ready home on 1.1 fenced and beautifully landscaped acres. 800 sq. ft. finished space above 2-car garage. #1297557. \$649,000.
Connie Cunningham • 206.853.5517



Exceptional Country Living

Stunning custom Linwood home on 2.33 sunny acres with wall of view windows & exposed beams. Private setting with fenced gardens. #1318881. \$645,000.
Denise Katz • 206.390.9149



Private A-Frame

Sophisticated design and chic finishes at every turn! Near Vashon town on a wooded acre. Expansive deck for entertaining. #1322927. \$525,000.
Sophia Stendahl • 206.992.4636



Beth de Groen

*Managing Broker
Owner, CRS, GRI, ABR*

■
Resident & Community
Activist Since 1976

■
Expert Consultation for
All Price Ranges Since 1993

■
Waterfront & Estate Specialist

■
Integrity & Wit—
House Hunting Should be Fun!

■
Leading Listing Agent &
Buyer's Representation



Private Waterfront Estate

206.463.9148 EXT 206

BETHD@WINDERMERE.COM
BETHDEGROENVASHON.COM

WINDERMERE VASHON

Private compound with 3 substantial buildings, shy 3 acres, 170 feet of low-bank waterfront, and a magical weir! Offered for the first time, this legacy property—with the deepest beach on inner Quartermaster Harbor—is unlike any other on Vashon-Maury. Waterside decks adjoin the warmth of a splendid weir pond. Gardens envelope the handsome 3-bedroom home. Massive interior beams, extensive wood, lend the feeling of being on a land-locked, majestic boat. A rare, incomparable opportunity! #1311322. Offered at \$2,450,000.

Graceful Vashon Island Craftsman



The Perfect Sunset

Graceful Craftsman on nearly 5 private acres overlooking the Olympics. Home features 5 bedrooms, warm wood accents, and a sunny view deck. Lovingly restored 2-story barn can be used for storage or studio. Rolling pasture, gardens, forest, and orchard—all surrounded by protected lands. A tranquil retreat! #1301512. Offered at \$899,000.

Beth de Groen

206.463.9148 EXT. 206 · BETHD@WINDERMERE.COM · BETHDEGROENVASHON.COM

Seattle Modern



Hip Georgetown Home

Carefully designed 4-bedroom home features light-filled rooms with walls of windows, tall ceilings, and open kitchen with quartz counters and high-end appliances. Spacious main floor captures mountain views. Plenty of outdoor space, including rooftop deck to enjoy sunsets and Olympic Mountain views. 2-car garage & RV parking. #1326862. Offered at \$999,000. Windermere Vashon.

CONNIE CUNNINGHAM



A VASHON NATIVE WITH
GREAT KNOWLEDGE &
LOVE FOR THE ISLAND

206.853.5517

ccunningham@windermere.com
CONNIECUNNINGHAM.COM

GEOFF BUNCH

BROKER

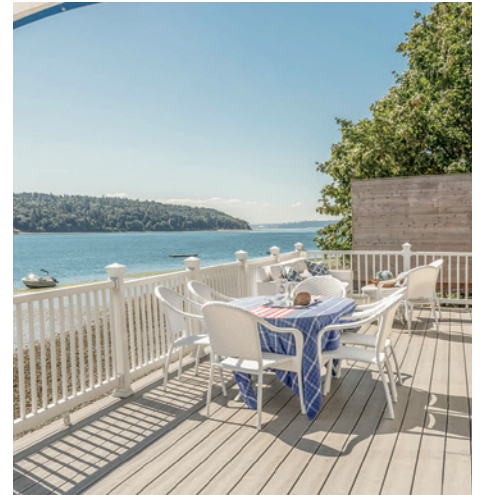


206.259.1551

GBUNCH@WINDERMERE.COM
WINDERMEREVASHON.COM

WINDERMERE VASHON

Vashon Waterfront Getaway



Charming Beach House

Enjoy 50 feet of low-bank frontage from this 2-bedroom home with sweeping views of Quartermaster Harbor. Open floor plan with exposed beam ceilings, large picture windows for natural light, daylight basement studio, and separate bunkhouse. Large Trex deck to soak up the sun. Your perfect waterfront getaway! #1324579. Offered at \$599,000.

Port Townsend Escape



Built for the View

Positioned above Admiralty Inlet overlooking the shipping lanes, Cascade Mountains, Mt. Baker and Whidbey Island, this custom home encompasses feelings of intimacy and tranquility while showcasing its grand design. Meticulously built to prioritize the views, the home boasts an open living/ formal dining area, chef's kitchen, generous master suite, guest quarters and a private office. Just blocks from fabulous in-town amenities. #1289237. \$2,495,000.

Jan Garing

360.301.5492 • JANGARING.COM • WRE/PORT TOWNSEND



Edmonds and Mukilteo are two thriving shoreline communities located in close proximity to both Seattle and Everett. Snohomish County's oldest incorporated town, Edmonds, is rich in history and recreational opportunities. In addition to its varied selection of restaurants, shops, and bars, Edmonds is home to a prosperous arts and culture community. It also offers easily accessible beaches, waterfront parks, and a walkable downtown district. Liked Edmonds, Mukilteo is an affluent and historic coastal community. The streets of Mukilteo are brimming with seasonal farmers markets, charming shops, and well-known restaurants. Mukilteo also offers sweeping views of the Puget Sound and is known as a regional transport hub for the ferry system, offering regular trips to Whidbey Island.



SOLD

Charming Seaview Home

Sound and mountain views! Main floor master with French doors. 2 decks, hardwood floors, gas heat and an abundance of storage. #1313873. \$705,000.

Kim Tornow • 425.672.1118 x275



PENDING

Edmonds Townhome

Like-new townhome features 3 bedrooms, 2.5 baths 9-foot ceilings, great outdoor space with hot tub, and designer finishes throughout. #1303667. \$625,000.

Adam E. Cobb • 206.854.9454



PENDING

Downtown Edmonds

Exceptional home with tasteful updates surrounded by pristine gardens on Hindley Lane; quiet and a joy to come home to. #1316692. \$899,000.

Buz & Max McKinley • 206.999.7647



PENDING

Stella's Landing Condo

Luxe condo in DT Edmonds with striking interior finishes, private outdoor entertaining. Well-maintained by homeowner's association. #1321187. \$725,000.

Amanda & Kristine Hovde • 206.940.6242



Woodway View

Tucked between Edmonds and Richmond Beach. Two-story, 4-bedroom traditional home with Sound views and private 1/3-acre lot. #1332133. \$1,249,250.

Lynn Kern • 206.755.2024 • lynnkern@windermere.com



PENDING

Point Edwards Lifestyle

Luxurious, 2-bedroom, 1,460 sq. ft. townhome with 12-foot ceilings, sun-drenched patio, skylights & much more. Resort-like living. #1320544. \$625,000.

Susan Moore • 206.719.6038



SOLD

Martha's Vineyard—Mukilteo

Desirable corner unit condo. 3 bedrooms, bonus room & family room. 2-car garage. Close to Seattle, golfing and other amenities. #1299693. \$425,000.

Rosenberger Team • 425.508.1429



SOLD

Harbour Pointe—Mukilteo

Well-maintained rambler on greenbelt lot. Beautiful sunroom entry, 3 bedrooms, 2 baths, vaulted ceilings. New paint and carpet. #1302016. \$550,000.

Kelly Wedin • 425.330.0148



PENDING

One Clubhouse Lane—Mukilteo

Highly sought-after One Clubhouse Lane home with new roof. 6 bedrooms, 4 baths, chef's kitchen, and Tuscany-inspired wine room. #1263850. \$975,000.

Tina Chun • 206.718.0658

Sharon & Steve
HARRISS



425.239.2946

HARRISS@WINDERMERE.COM

WRE/M2, LLC

Mukilteo Views



Taste of Tuscany

Stunning view home enjoying Puget Sound, Olympic Mountain & Whidbey Island Views. 3,600+ sq. ft. of luxury on a huge private lot. Imported tile flooring, Brazilian hardwoods & chef's granite kitchen. Incredible master suite, family/media room, wine cellar. 3-car garage + RV parking. Elevator installed for access. #1317207. \$1,599,500.

RENÉ PORUBEK

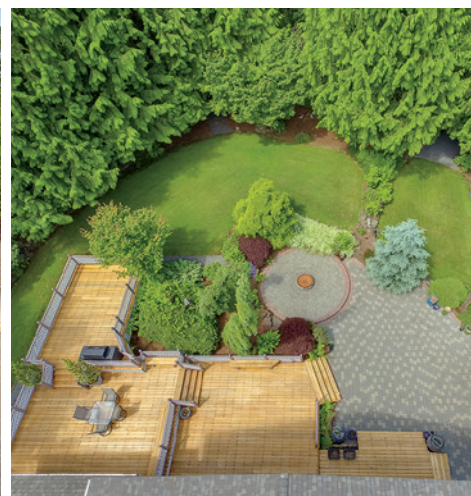


425.478.8864

renep@windermere.com

WRE/M2, LLC

Pristine Gem in Everett



1.42 Acres of Pure Tranquility

Pristine gem with immense deck and patio surrounded by sculptured landscaping with an emphasis on privacy. Open living space for today's lifestyle with quality upgrades. Generous picture windows breathe in sunlight to all living spaces giving warmth showcasing a beautiful setting. Sub-dividable-buyer to verify. #1327958. \$899,000.

AEC

ADAM E. COBB

INTEGRITY | LUXURY EXPERT | INNOVATIVE MARKETING
THE WOODWAY SPECIALIST

206.854.9454

adam@adamcobb.com · adamcobb.com

WRE/GH LLC



Rare Double Lot · Roanoke Park

6-bedroom estate with original character throughout on an 11,000 sq. ft. lot. Enjoy oversized 5,500 sq. ft. yard or build an investment property!

Offered at \$2,875,000 · #1314150



ON THE COVER · Woodway Estate

Privately gated estate on a parklike setting. Incredible craftsmanship throughout with sophisticated interiors & unrivaled design features.

Offered at \$3,175,000 · #1319697



Unparalleled Views · Edmonds

Perched at the top of Edmonds with unparalleled, 180-degree Sound & mountain views, this stately residence takes your breath away.

Offered at \$2,350,000 · #1277947



Jewel of Woodway Highlands

Luxurious-yet-relaxed residence features soaring ceilings, gleaming ebony floors, & a state-of-the-art gourmet kitchen. Stunning grounds.

Offered at \$1,699,000 · #1344308

Freeland 360.331.6006 • Langley 360.221.8898 • Coupeville 866.686.4200 • Oak Harbor 866.675.5953
WRE/South Whidbey & WRE/Whidbey Island



Whidbey Island is regarded as one of the most beautiful islands in Washington State.

Reachable by ferry or by car via the Deception Pass Bridge, residents and tourists alike are drawn to this island for its wide-open beaches, scenic vistas, outdoor adventures, great art, fine dining, and more. The largest island in Island County, Whidbey is rich in opportunities for recreation and leisure, including whale watching, hiking, and beach combing. On the northern part of the island, the economy revolves largely around the local naval air station. Tourism, art, and small-scale agriculture are the focus for south Whidbey. The entire island is known for its breezy summers and mild winters, making the area a draw for visitors year-round.



Oak Harbor Island Retreat

High-bank beachfront. 2 bedrooms, 2 baths. Separate water view art studio. Fully fenced in yard. Private staircase to the beach. #1312410. \$1,050,000.

Anita Johnston • 360.320.7634



Coupeville Contemporary

High-bank waterfront on 2.27± acres. Meticulously maintained with fabulous living areas & multiple outdoor areas to enjoy. #1295401. \$949,000.

Steve Strehlau/Gordy Frederickson • 206.819.3411



Tranquility Awaits

3-bedroom, 3.25-bath home looks across Penn Cove. Open floor plan, vaulted ceilings and wall of windows bring in natural light and views. #1316087. \$650,000.

Jennifer Roberts • 360.969.1135



North Whidbey Waterfront

High-bank waterfront. Views of Mt. Baker. 2 bedrooms, 2.5 baths. Master suite with private balcony. Two office spaces. Hot tub. #1283835. Listed at \$615,000.

Linda Earnhart • 360.929.0922



Pastoral Perfection

No detail overlooked! Tastefully updated, one-level 1,724 sq. ft. home on 9.4 ± acres. 4-stall barn with loft and heated tack room. #1322561. \$575,000.

Jennifer Wynn • 206.713.9678



Greenbank Waterfront Home

High-bank waterfront. 2 bedrooms, 1 bath. Freestanding woodstove. Studio above garage. Wooded acreage. Spectacular sunrises. #1304627. \$519,000.

Tom Kier • 360.333.2248



Clinton Home

Lovely home with open floor plan, large bonus room, and spacious kitchen. Beautifully landscaped with greenhouse. Minutes to ferry! #1328642. \$459,000.

Amy Rudometkin • 808.463.4674



Freeland Home on Acreage

Newer one-level home with open floor plan, 3 bedrooms, 2-car garage plus shop. RV parking and sunny patio for entertaining. #1282141. \$469,000.

Kim Rossi • 206.832.6021



Privacy Found in Coupeville

Fully updated interior, grand deck for entertaining, large lot with mature trees, end of cul de sac. Short stroll to downtown Coupeville. #1321761. \$435,000.

Rebecca Robinson • 360.929.2419



Private Westside Waterfront Estate

Ultra-private estate down a tree-lined drive on over 21 acres facing west to the Olympics. The 5,336± sq. ft. waterfront home is in a parklike setting with a guest house, studio, oversized garage, and secret garden.

Offered at \$6,250,000 · LouisMuniz.com/mls/954481



Serenity on Smugglers Cove

Westerly views of the Olympic Mountains, shipping lanes and evening sunsets are wrapped into one exceptional package. An open floor plan and waterfront view deck offer the best of indoor and outdoor living.

Offered at \$1,150,000 · LouisMuniz.com/mls/1324227



Contemporary Living on Bush Point

Thoughtful design; 1,652± sq. ft. lives much larger with high ceilings, open floor plan & additional detached studio. Repurposed materials, such as metal with glass stair railings, add to the sleek modern character.

Offered at \$675,000 · LouisMuniz.com/mls/1315049

LOUIS
MUNIZ



WHIDBEY ISLAND
PREMIER DIRECTOR

YOUR ISLAND
LIFE CONCIERGE

360.969.1028

louismuniz@windermere.com

LOUISMUNIZ.COM

WRE/SOUTH WHIDBEY



Our Certified Buyer Program™ is designed to get you home.



In today's competitive market, our program gives you an edge and ensures you have the tools you need to get your offer accepted.

To learn more visit www.thecertifiedbuyer.com

At Penrith, we understand the importance of home and we'd be honored to assist you.

www.penrithloans.com • (800) 867-1337



* Some restrictions may apply. See WMS Guarantee Certificate for more information.
This document is not intended as an offer to extend credit nor a commitment to lend.

WMS Series LLC dba Penrith Home Loans
WA-CL 713524, OR-ML 5271

